



**CLIVEPEARCE**  
Now you're moving

2 Bedrooms

Bungalow - Detached

Asking Price

£310,000

Located in

Truro



[www.clivepearceproperty.com](http://www.clivepearceproperty.com)



# Midway Drive

Truro | Cornwall | TR1 1NQ



A spacious two bedroom bungalow tucked away in a sought after traffic free Truro location. Very well-presented inside with French doors to an impressive and private composite sun-deck. Attractive gardens on three sides with mature planting, hedge and lawn. Single garage and nearby on street parking.



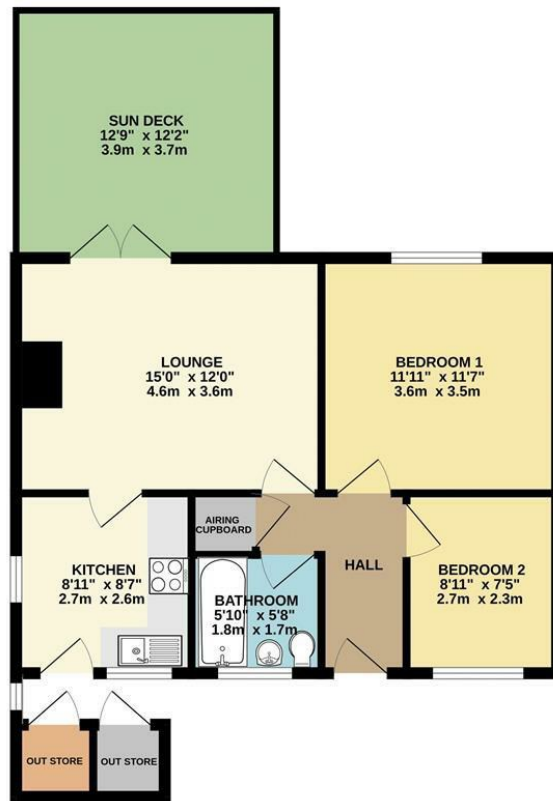
# Midway Drive

£310,000 Freehold



- Two Bedrooms
- Single garage
- Mains gas central heating
- Tucked away traffic free location
- Spacious and private garden with composite sun-deck
- Nearby additional on street parking
- Bright, well-presented living space
- UPVC double glazing

## GROUND FLOOR



Whilst every attempt has been made to ensure the accuracy of the floorplan contained here, measurements of doors, windows, rooms and any other items are approximate and no responsibility is taken for any error, omission or mis-statement. This plan is for illustrative purposes only and should be used as such by any prospective purchaser. The services, systems and appliances shown have not been tested and no guarantee as to their operability or efficiency can be given.  
Made with Metropix ©2024

## Council Tax Band C

## Local Authority

Agents Note: Whilst every care has been taken to prepare these particulars, they are for guidance purposes only. All measurements are approximate and are for general guidance purposes only and whilst every care has been taken to ensure their accuracy, they should not be relied upon and potential buyers/tenants are advised to recheck the measurements.

Energy Efficiency Rating		
	Current	Potential
Very energy efficient - lower running costs		
(92 plus) <b>A</b>		
(81-91) <b>B</b>		88
(69-80) <b>C</b>		
(55-68) <b>D</b>	66	
(39-54) <b>E</b>		
(21-38) <b>F</b>		
(1-20) <b>G</b>		
Not energy efficient - higher running costs		
England & Wales		EU Directive 2002/91/EC

31 Lemon Street  
Truro  
Cornwall  
TR1 2LS



**CLIVEPEARCE**  
Now you're moving

hello@clivepearceproperty.com

01872 272622

www.clivepearceproperty.com